

## DRI-Line Series: Method of Air Delivery: Can Tunnels

Based upon a tunnel configuration, ACI's can drying systems have been specifically developed to provide configured slots that direct air to remove water efficiently from either the lids or bottoms of cans travelling at high speeds.



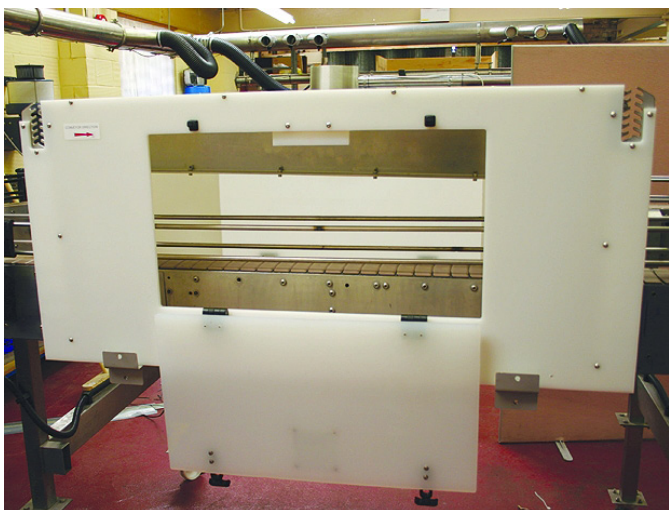
The enclosure has the added benefit of ensuring that both noise and water spray are contained. More traditional 'open' design can drying systems using only Airknives often suffer from the problem of spray from the drying process settling on cans further down the line, causing contamination.

The Can Tunnel is a fully enclosed unit which sits over the production/conveyor line. Inside the enclosure is a plenum with a "Y" shaped exit slot, through which air is blown. This air then pushes off the water held in the can recess. In order to ensure even distribution and a uniform exit velocity, the ratio between the exit slot area and the blower discharge area is sized to give a reasonable back-pressure within the plenum.

The tunnel configuration significantly reduces the noise of the drying process and contains spray. The ACI Can Tunnel is suitable for high speed lines and is compatible with all of the DRI-Line system configurations.

### The Options:

ACI Can Tunnels are available in single and/or multi-line options. Additionally, inspection hatches can be fitted.



DEA's can tunnel fitted with inspection hatch



DEA's multi-lane can drying tunnel



**The Benefits:**

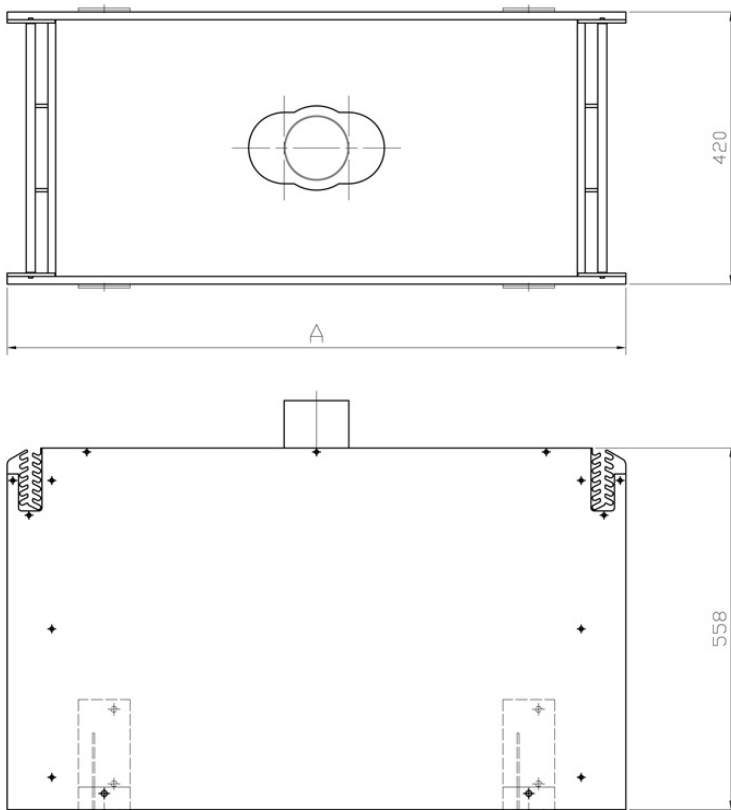
- Improved drying performance.
- Water spray contained.
- Noise reduced.
- Simple & quick to install.
- Simple single operator adjustment for different can heights.
- Whole assembly just lifts off the line for cleaning and conveyor maintenance.

**Standard Unit Construction:**

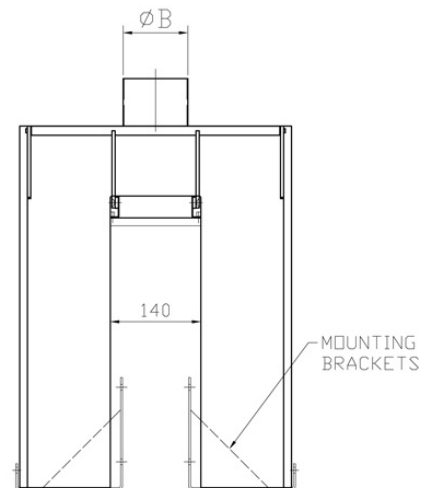
The Can Tunnel is constructed from polypropolyene with a stainless steel plenum and adjustment plate. The polypropolyene box construction acts as a baffle plate for both sound and liquid: liquid is forced from the can onto the sides of the box. Additionally, two Can Tunnels can be used in series for lines travelling at high speeds or for systems requiring both the tops and bottoms of cans to be dried.

**Standard Dimensions:**

The can tunnels are available in various dimensions [i.e. 2 to 4 slots] according to parameters such as the speed of conveyor line and the area of the can that is required to be dried.



	A	B
<b>2 slot</b>	696	Ø76
<b>3 slot</b>	956	Ø100
<b>4 slot</b>	1216	Ø100



Please note [1] - all drawings measurements are in millimeters (mm)  
 Please note [2] - above technical specifications are subject to change