

DRI-Line Series - Cap and Neck Dryer



Used to remove moisture from under the crown cap's of 33ml glass bottles – 55,000 bottles/hour.

ACI's Cap Dryer is a small nozzle manifold with a fixed array of nozzles, allowing air to blast liquid off the product.

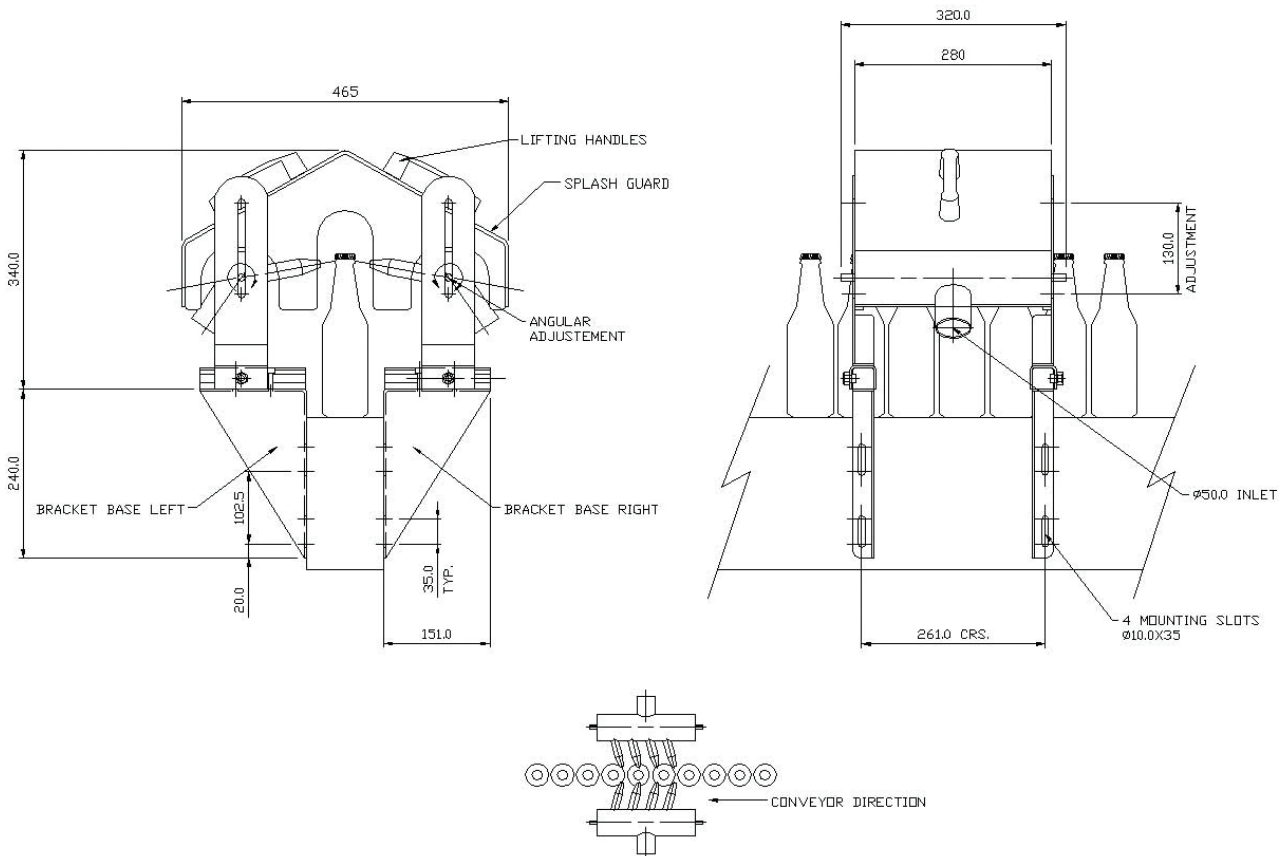
The unit consists of 2 Stainless Steel manifolds with 4 discharges on each at $\varnothing 9\text{mm}$ and is supplied with a clear Makralon splash cover for easy visibility.

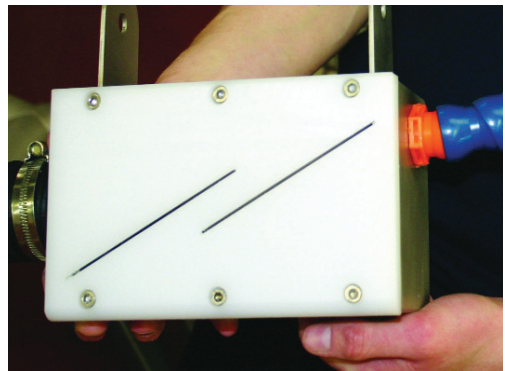
The unit works primarily on the drying of bottles with crown caps and is also used with date coders. Air blasts the liquid from under the cap, reducing the possibility of corrosion/contamination.

Specification:

- 2 inlets $\varnothing 50$.
- Upto 8 nozzles, giving total open area of 510mm^2 .
- Brackets bolt directly to the conveyor.

Outline Drawing





ACI's Neck Dryer has been designed specifically for the drying of wine bottle necks so that neck labels will stick effectively and neck printing can be carried out satisfactorily.

The ACI Neck Dryer is comprised two off Stainless Steel plenums, with a JetPlate style discharge made from PE 1000. Each plate has two slots of 100 x 1.5mm and a pre-determined slot pattern, allowing air to blast liquid off the product.

The ratio between the exit slot area and the blower discharge area is sized to give a reasonable back pressure within the plenum. This ensures an even distribution, giving a relatively uniform exit velocity.

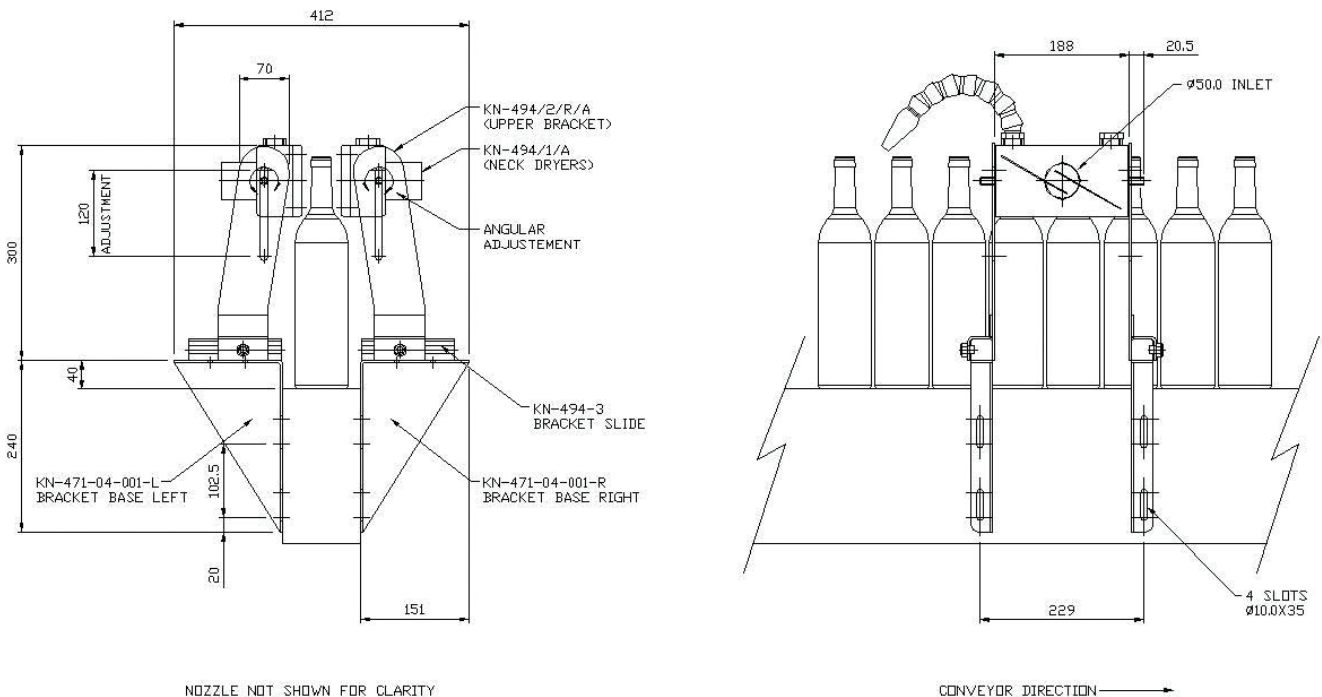
The Neck Dryer Unit uses JetPlate style bracketry, allowing easy movement and adjustment.

The Neck Dryer is designed to fit over the guide bars so no modification of these is required. The Neck Dryer can be moved to suit various sizes of product by adjustment of the mounting brackets.

Specification:

- 2 Inlets \varnothing 50mm.
- 4 slots 100mm long x 1.5mm (2 per side).
- Brackets bolt directly on to the conveyor.

Outline Drawing



Please note [1] - all drawings measurements are in millimeters (mm)
 Please note [2] - above technical specifications are subject to change